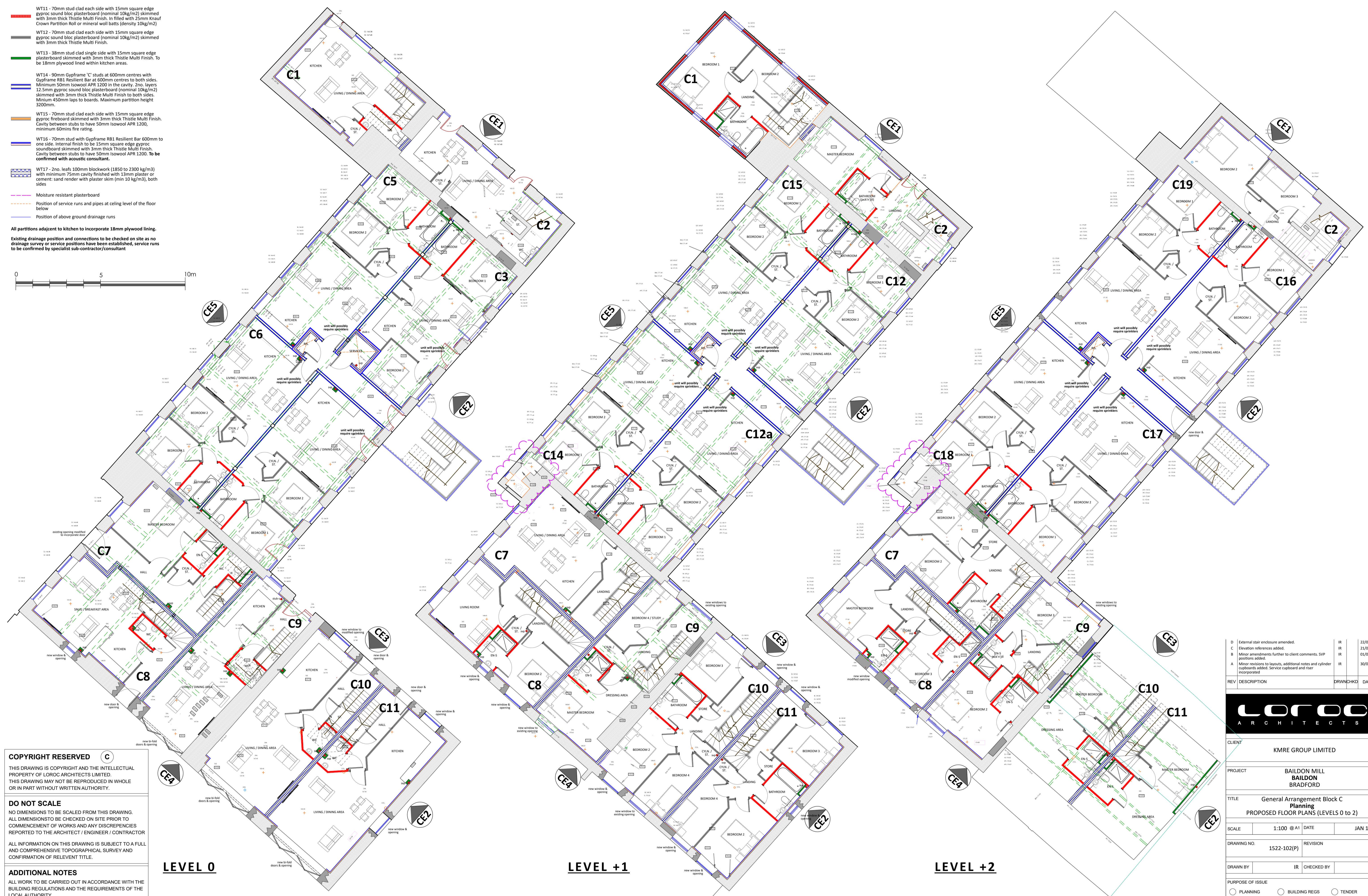
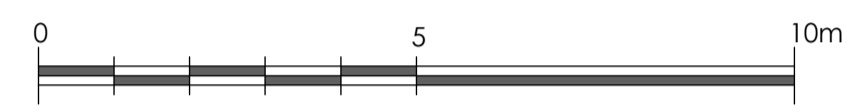


Internal Wall Key

- WT11 - 70mm stud clad each side with 15mm square edge gyproc sound bloc plasterboard (nominal 10kg/m²) skimmed with 3mm thick Thistle Multi Finish. In filled with 25mm Knaf Crown Partition Roll or mineral wool batts (density 10kg/m²)
- WT12 - 70mm stud clad each side with 15mm square edge gyproc sound bloc plasterboard (nominal 10kg/m²) skimmed with 3mm thick Thistle Multi Finish.
- WT13 - 38mm stud clad single side with 15mm square edge plasterboard skimmed with 3mm thick Thistle Multi Finish. To be 18mm plywood lined within kitchen areas.
- WT14 - 90mm Gypframe 'C' studs at 600mm centres with Gyframe RBL Resilient Bar at 600mm centres to both sides. Minimum 50mm Iso wool APR 1200 in the cavity. 2no. layers 12.5mm gyproc sound bloc plasterboard (nominal 10kg/m²) skimmed with 3mm thick Thistle Multi Finish to both sides. Minimum 450mm laps to boards. Maximum partition height 3200mm.
- WT15 - 70mm stud clad each side with 15mm square edge gyproc fireboard skimmed with 3mm thick Thistle Multi Finish. Cavity between studs to have 50mm Iso wool APR 1200, minimum 60mins fire rating.
- WT16 - 70mm stud with Gyframe RB1 Resilient Bar 600mm to one side. Internal finish to be 15mm square edge gyproc soundboard skimmed with 3mm thick Thistle Multi Finish. Cavity between studs to have 50mm Iso wool APR 1200. To be confirmed with acoustic consultant.
- WT17 - 2no. leafs 100mm blockwork (1850 to 2300 kg/m³) with minimum 75mm cavity finished with 13mm plaster or cement: sand render with plaster skim (min 10 kg/m³), both sides.
- Moisture resistant plasterboard
- Position of service runs and pipes at ceiling level of the floor below
- Position of above ground drainage runs

All partitions adjacent to kitchen to incorporate 18mm plywood lining.
Existing drainage position and connections to be checked on site as no drainage survey or service positions have been established, service runs to be confirmed by specialist sub-contractor/consultant



LEVEL 0

LEVEL +1

LEVEL +2

COPYRIGHT RESERVED
THIS DRAWING IS COPYRIGHT AND THE INTELLECTUAL PROPERTY OF LOROC ARCHITECTS LIMITED. THIS DRAWING MAY NOT BE REPRODUCED IN WHOLE OR IN PART WITHOUT WRITTEN AUTHORITY.

DO NOT SCALE
NO DIMENSIONS TO BE SCALED FROM THIS DRAWING. ALL DIMENSIONS TO BE CHECKED ON SITE PRIOR TO COMMENCEMENT OF WORKS AND ANY DISCREPANCIES REPORTED TO THE ARCHITECT / ENGINEER / CONTRACTOR
ALL INFORMATION ON THIS DRAWING IS SUBJECT TO A FULL AND COMPREHENSIVE TOPOGRAPHICAL SURVEY AND CONFIRMATION OF RELEVANT TITLE.

ADDITIONAL NOTES
ALL WORK TO BE CARRIED OUT IN ACCORDANCE WITH THE BUILDING REGULATIONS AND THE REQUIREMENTS OF THE LOCAL AUTHORITY

ADDITIONAL COMMENTS DENOTED ON DWG AREA AS (CDM)
CDM 2015 PERCEIVED SIGNIFICANT RESIDUAL RISKS THAT ARE EITHER / OR ANY COMBINATION OF THE FOLLOWING :
NOT OBVIOUS ■ UNUSUAL ■ DIFFICULT TO MANAGE

D	External stair enclosure amended.	IR	22/02/18
C	Elevation references added.	IR	21/02/18
B	Minor amendments further to client comments. SVP positions added.	IR	01/02/18
A	Minor revisions to layouts, additional notes and cylinder cupboard added. Service cupboard and riser incorporated.	IR	30/01/18

REV	DESCRIPTION	DRWN/CHKD	DATE

LOROC ARCHITECTS

CLIENT: **KMRE GROUP LIMITED**

PROJECT: **BALDON MILL
BALDON
BRADFORD**

TITLE: **General Arrangement Block C
Planning
PROPOSED FLOOR PLANS (LEVELS 0 to 2)**

SCALE: 1:100 @ A1 DATE: JAN 18

DRAWING NO. 1522-102(P) REVISION D

DRAWN BY: IR CHECKED BY:

PURPOSE OF ISSUE:
 PLANNING BUILDING REGS TENDER
 APPROVAL COMMENT CONSTRUCTION

LOROC ARCHITECTS
LEEDS OFFICE: 25a PARK SQUARE WEST, LEEDS LS1 2PW, T: 0113 233 7755
LONDON OFFICE: 3RD FLOOR, 86-90 PAUL STREET, LONDON EC2A 4NE, T: 0203 876 5333
E: info@loroc.co.uk W: www.loroc.co.uk