



BAILDON MILL PHASE 1 DEMOLITION

PROGRESS REPORT WEEK 5

Thursday, 27 May 2021

Prepared For KMRE / Crown Construction Projects

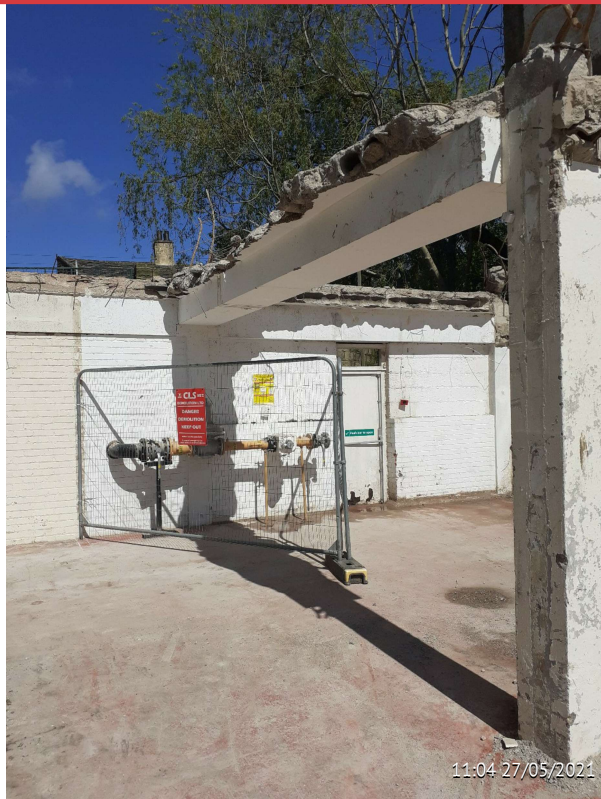
16 Issues Identified



ISSUE 1

Assigned To CLS

60's building 100% completed



ISSUE 2

Assigned To CLS

Gas fenced off & un damaged



ISSUE 3

Assigned To CLS

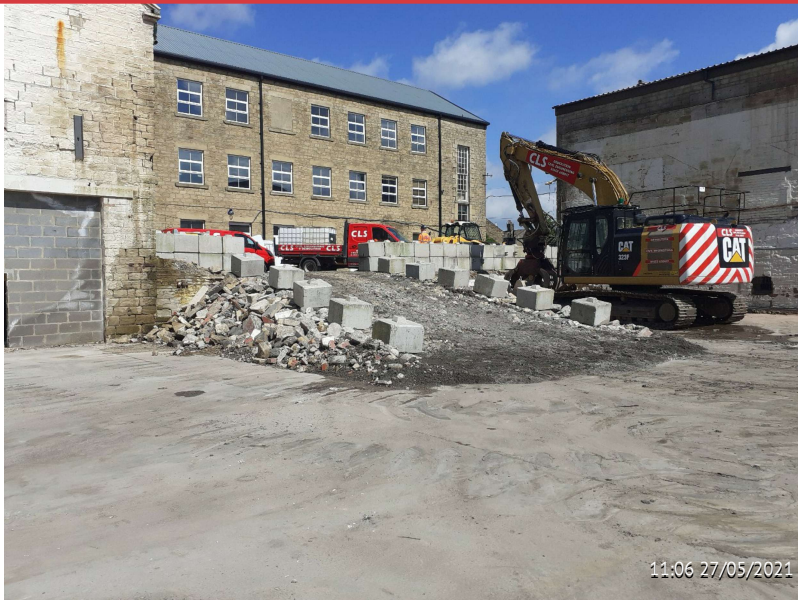
Cement sheets segregated



ISSUE 4

Assigned To CLS

Waste pile ready for crushing



ISSUE 5

Assigned To CLS

Ramp retained & edge protection in place



ISSUE 6

Assigned To CLS

Salvage stone for potential re-use



ISSUE 7

Assigned To CLS
Site left clean & tidy



ISSUE 8

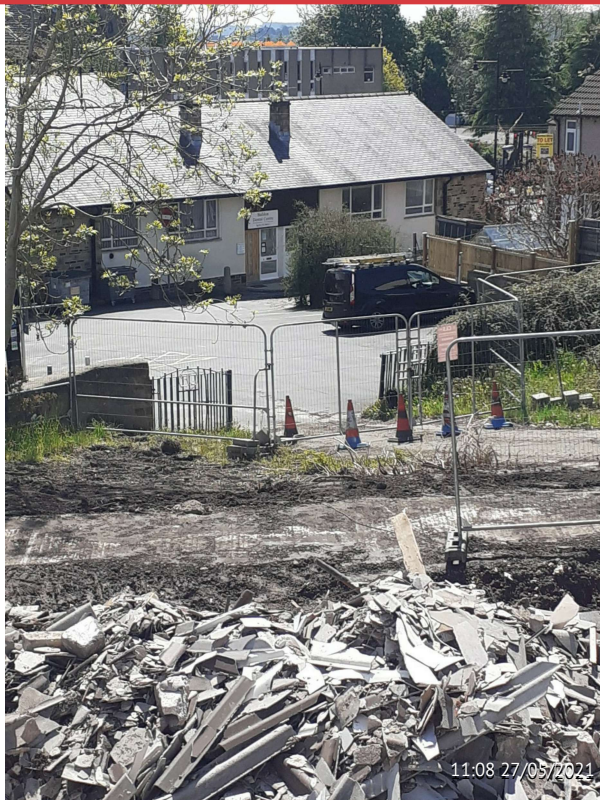
Assigned To CLS
As Previous



ISSUE 9

Assigned To CLS

Note gable end will require structural assessment



ISSUE 10

Assigned To CLS

Rear of site secured



ISSUE 11

Assigned To CLS

Location of test hole



ISSUE 12

Assigned To CLS

Instruction issued to open up window light well to basement windows



ISSUE 13

Assigned To CLS

Note secondary ramp
discoverd & removed



ISSUE 14

Assigned To CLS

Trial holes dug as instructed x
3 and soil sent for analysis



ISSUE 15

Assigned To CLS

Foundations exposed to
block B (as Previous item)



ISSUE 16

Assigned To CLS

Locations of trial pits x 4